



AG / SAG Mill Liners



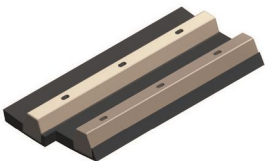
Discharge Systems

Polycorp's rubber dischargers can be retrofitted to replace steel dischargers with existing drilled holes in the discharge head.



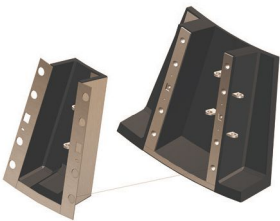
PolyBlok™ Liners

A one piece liner engineered for **SAG**, **AG** and **Ball Mills** of larger diameter and custom designed to reduce the number of mill liner parts, and installation times.



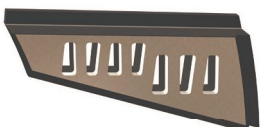
PolyKombo™ Liners

PolyKombo™ Liners are changing the way Mills upgrade from steel liners. **PolyKombo™** is a one piece liner with steel lifters and **PolyStl™** rubber plates.



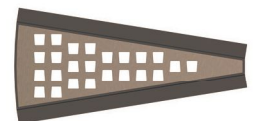
PolyWIP™

PolyWIP™ Pulp Lifter inserts extend the life of prematurely worn Pulp Lifters. These inserts can be used on top of the worn rubber steel pulp lifters and are held in the mill using existing grate holes, eliminating any extra fixing.



Polycorp JCL Grates

Eliminate grate blockage caused by ball entrapment. **Polycorp JCL Grates** are designed with slots of variable openings that allow larger balls to abandon the mill charge before they block the slot.



Polycorp's complete in-plant facilities ensure total control over the design and manufacture of the product from computer assisted application design to the premium rubber compound that is formulated and tested prior to moulding. The result is a product whose quality has been proven over decades of use, in hundreds of installations worldwide, enhancing efficiency and service at a competitive cost.

